

**SASE SHAM, INC.**

---

**Wireless AutoSwitch XPV  
Installation Guide**

# Wireless AutoSwitch XPV Installation Guide

---

© Sase Sham, Inc.  
7 Greenridge Ave • Suite 5B  
Phone 718.930.1990 • Email [sase@saseshaminc.com](mailto:sase@saseshaminc.com)

---

# Table of Contents

<b>INTRODUCTION .....</b>	<b>1</b>
<b>BASIC INSTALLATION .....</b>	<b>1</b>
<b>BASIC USAGE .....</b>	<b>7</b>
<b>DIFFERENT MODES OF OPERATION.....</b>	<b>8</b>
WINDOWS XP MODES.....	8
WINDOWS VISTA, WIN 7, 8 AND 10 MODES.....	9
CHANGING OPTIONS MANUALLY AFTER INSTALLATION.....	9
<b>OPTIONS.....</b>	<b>10</b>
MESSAGES .....	10
BLUETOOTH.....	10
MODEMS.....	10
RELEASE DHCP.....	11
REGISTER DNS .....	11
START DISABLED.....	11
<b>ADVANCED INSTALLATION.....</b>	<b>12</b>
<b>WHAT IT DOES.....</b>	<b>13</b>
<b>INCLUDE WIRELESS NETWORK ADAPTERS .....</b>	<b>13</b>
<b>EXCLUDE NETWORK ADAPTERS.....</b>	<b>13</b>
<b>IGNORE WIRELESS NETWORK ADAPTERS .....</b>	<b>14</b>
<b>KNOWN ISSUES .....</b>	<b>14</b>
<b>OTHER PRODUCTS.....</b>	<b>14</b>
<b>SUPPORT .....</b>	<b>14</b>

---

## Introduction

This manual will guide you through the installation and use of Wireless AutoSwitch XPV. Whether using it for personal use or corporate deployment you will find all necessary installation information below.

Wireless AutoSwitch XPV works on Windows XP, Windows Vista, Windows 7 and Windows 8. It runs as a service and will automatically disable all wireless cards and modems when you are connected to a LAN (hard wire) connection, and re-enable the wireless cards and modems when there is no LAN connection. This ensures that you are always using the fastest connection for network traffic. In the office this helps reduce redundant network connections, while still helping your employees seamlessly transfer from wired to wireless network connections.

For offices that are wireless security conscious this application makes sure the laptop's wireless card is off when the user is wired into your network.

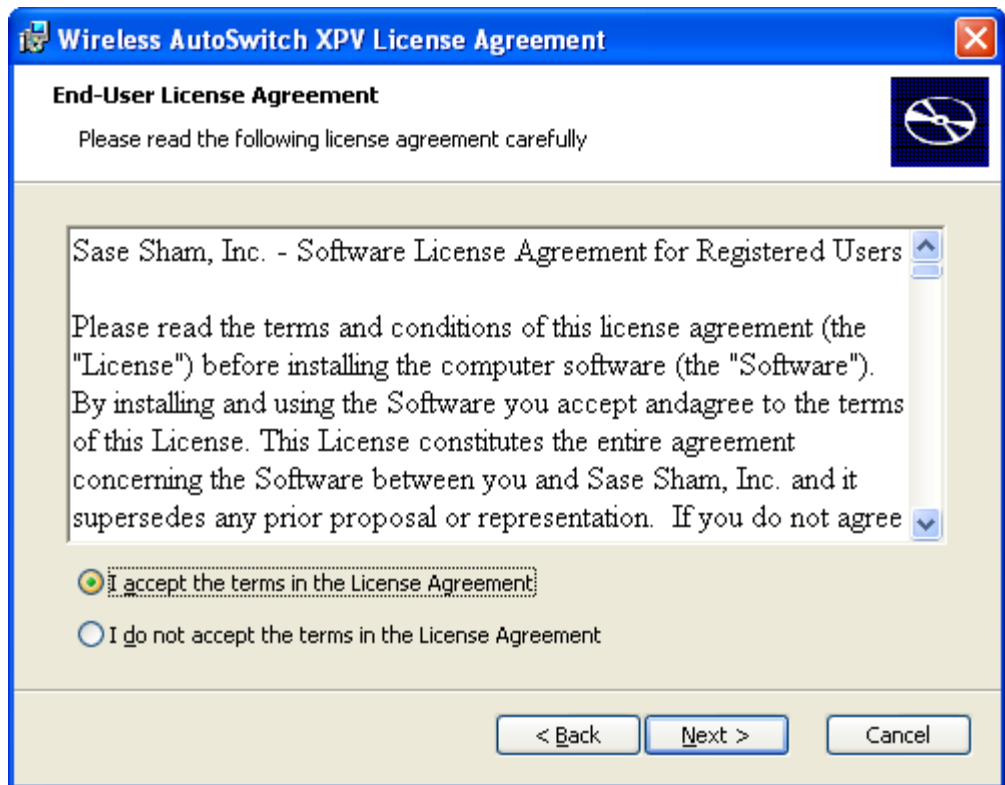
## Basic Installation

For a basic installation all you need to do is run the downloaded msi and you will see the following dialog. Click **Next**.



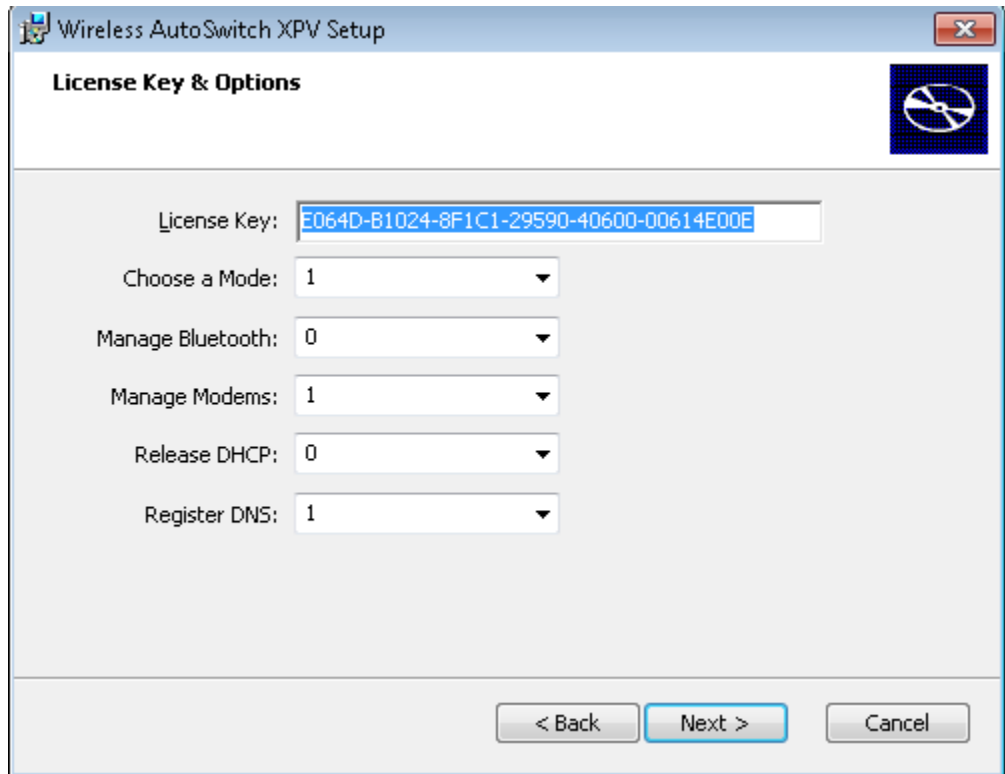
## WIRELESS AUTOSWITCH XPV INSTALLATION

Now you will see the License Agreement dialog. Read the license agreement and select “I accept the terms in the License Agreement” and click **Next**.



## WIRELESS AUTOSWITCH XPV INSTALLATION

Now you will see the License and Options dialog. The dialog will be pre populated with a default license key that will give you a 30 day trial of the application. If you have a permanent license key enter it. Choose the other options as desired. See options section below for information on the different options. Click **Next**.



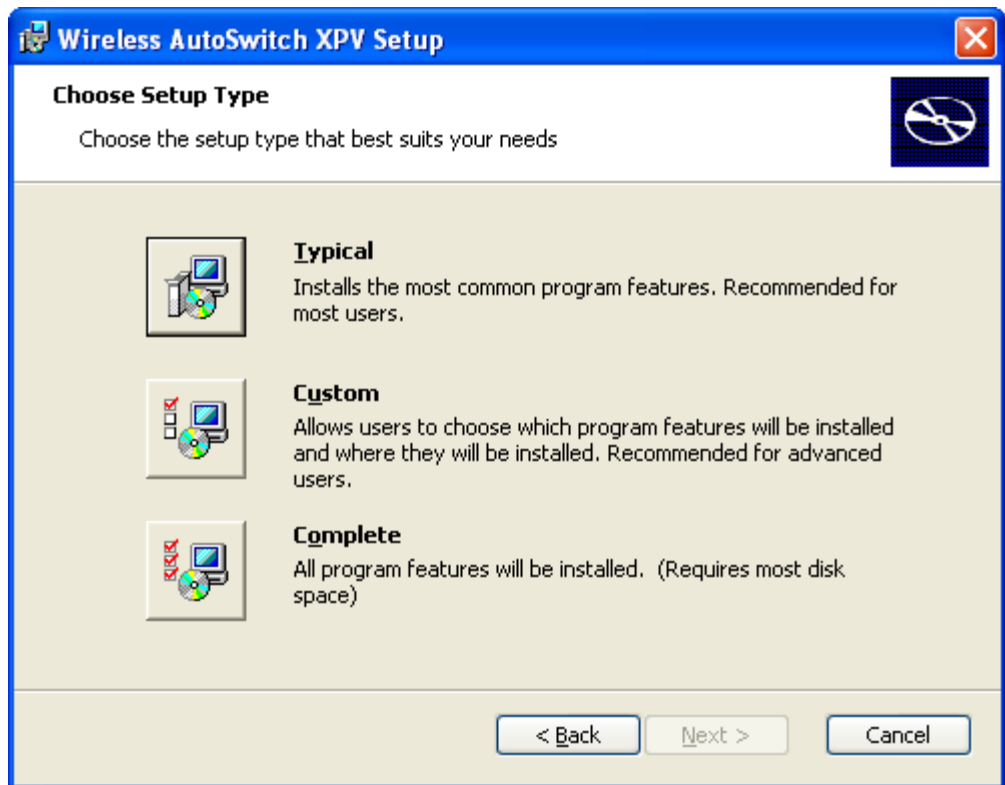
The screenshot shows a Windows-style dialog box titled "Wireless AutoSwitch XPV Setup". The main heading is "License Key & Options". The dialog contains the following fields and options:

- License Key:
- Choose a Mode:
- Manage Bluetooth:
- Manage Modems:
- Release DHCP:
- Register DNS:

At the bottom of the dialog, there are three buttons: "< Back", "Next >", and "Cancel". The "Next >" button is highlighted with a blue border.

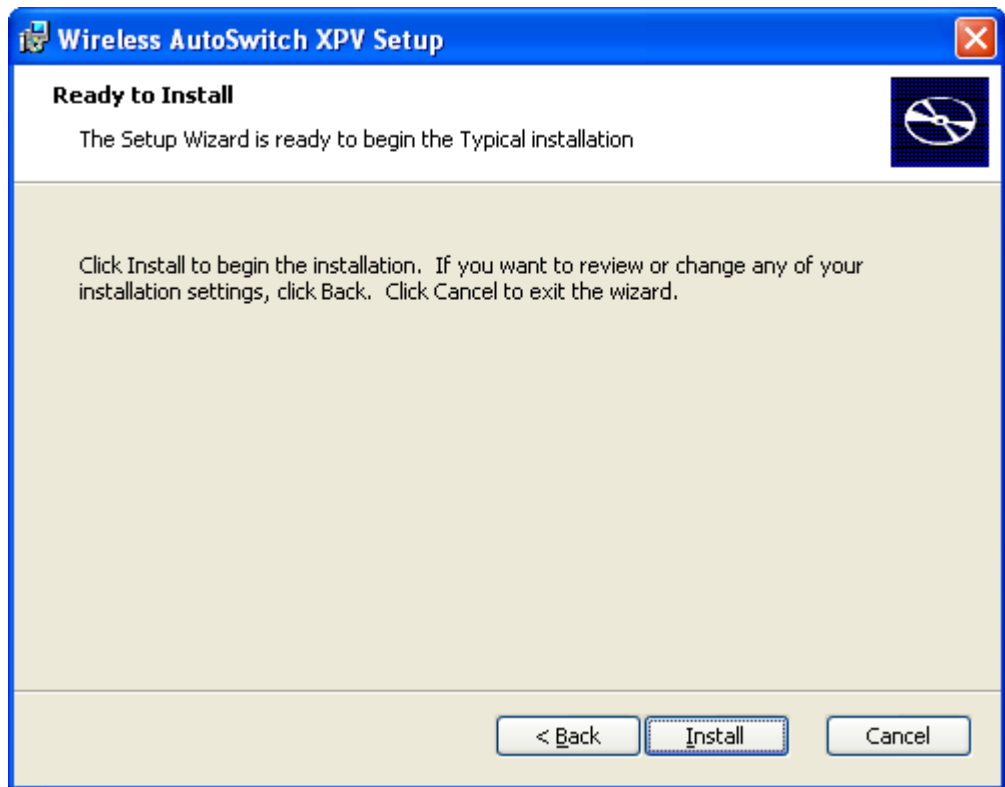
## WIRELESS AUTOSWITCH XPV INSTALLATION

You can now choose the setup type. Choose “Custom” if you wish to change the default installation path. Click **Next**.



## WIRELESS AUTOSWITCH XPV INSTALLATION

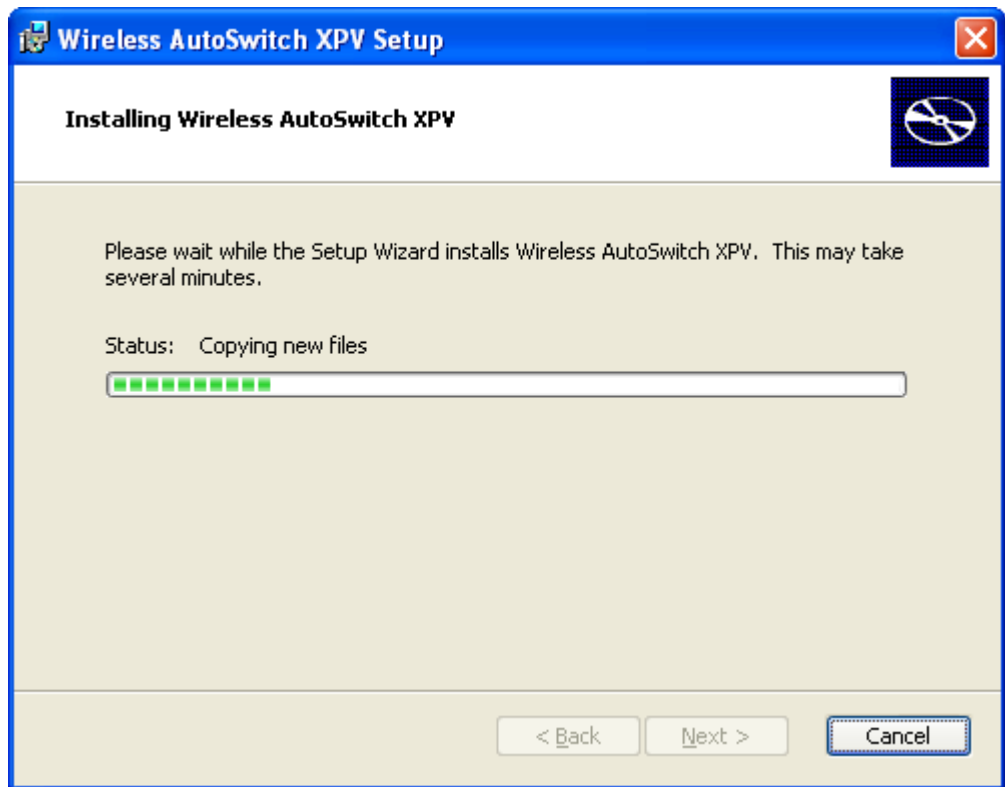
Now the application is ready to be installed. Click “Install”.



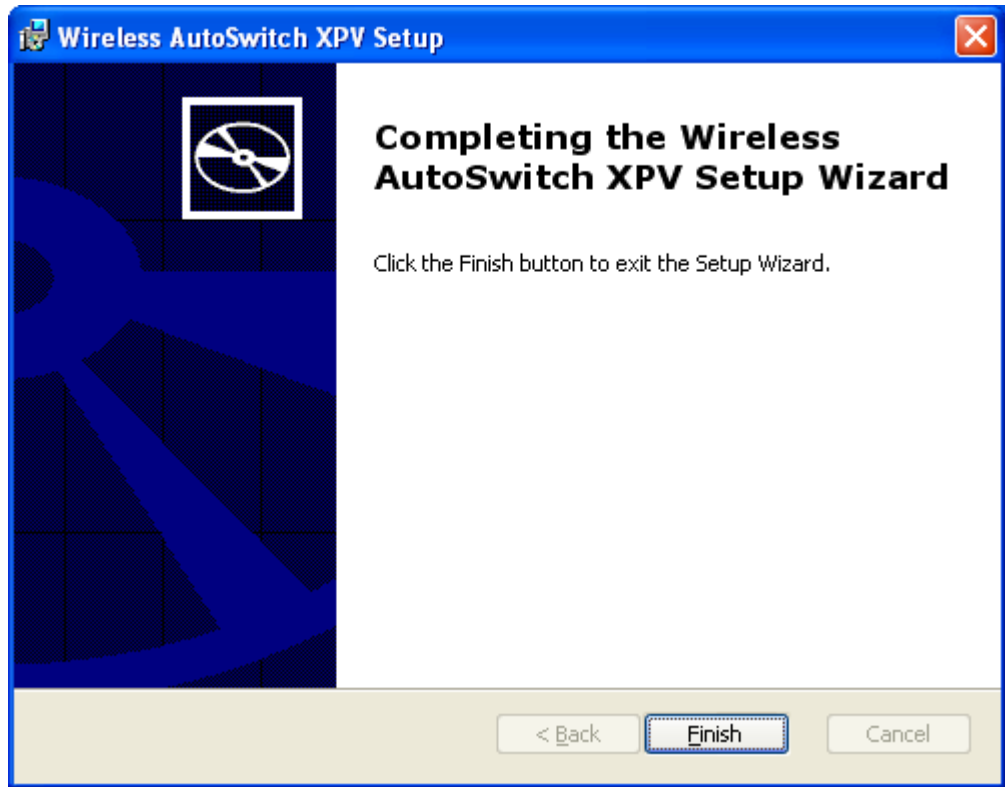


## WIRELESS AUTOSWITCH XPV INSTALLATION

Wireless AutoSwitch XPV will now install.



Now you will see the Installation Complete dialog. Click **Finish**.



That is all you need to do for a basic installation. The application is installed and started immediately.

## Basic Usage

Once Wireless AutoSwitch is installed it will work automatically without any need for user interaction. Test it for yourself:

Action to Perform	Result You will Observe
Disconnect your wired connection	The wireless card will be enabled
Reconnect your wired connection	The wireless card is disabled

## Different Modes of Operation

There are two or four modes of operation depending on which operating system Wireless AutoSwitch is installed on. Select the one that fits you needs.

### Windows XP Modes

For Windows XP, Wireless AutoSwitch has 4 different modes. Each mode does something a little different. The default installation mode is Mode 1.

Mode 1:

- Starts when windows starts, however it waits for the user's desktop (Program Manager) to be loaded before it actually enable or disable the wireless card.
- Installs a shortcut called "Wireless AutoSwitch On-Off" so the user can manually turn it off and on.
- User can manually enable the wireless card and Wireless AutoSwitch will not automatically turn it off.

Mode 2:

- Starts when windows starts, however it waits for the user's desktop (Program Manager) to be loaded before it actually enable or disable the wireless card.
- No shortcut created.
- If the user manually enables the wireless card Wireless AutoSwitch will automatically turn it off.
- The system is re-scanned for any new wireless cards every two minutes

Mode 3:

- Starts when windows starts, does not wait for the user's desktop (Program Manager). \*\*\*May slow down Windows Start Up time.
- Installs a shortcut called "Wireless AutoSwitch On-Off" so the user can manually turn it off an on.
- User can manually enable the wireless card and Wireless AutoSwitch will not automatically turn it off.

Mode 4:

- Starts when windows starts, does not wait for the user's desktop (Program Manager). \*\*\*May slow down Windows Start Up time.
- No shortcut created
- If the user manually enables the wireless card Wireless AutoSwitch will automatically turn it off.
- The system is re-scanned for any new wireless cards every two minutes.

## Windows Vista, Win 7, 8 and 10 Modes

Mode 1:

- Starts when windows starts, does not wait for the user's desktop.
- Installs a shortcut called "Wireless AutoSwitch On-Off" so the user can manually turn it off and on.
- User can manually enable the wireless card and Wireless AutoSwitch will not automatically turn it off.

Mode 2:

- Starts when windows starts, does not wait for the user's desktop.
- No shortcut created.
- If the user manually enables the wireless card Wireless AutoSwitch will automatically turn it off.
- The system is re-scanned for any new wireless cards every two minutes.

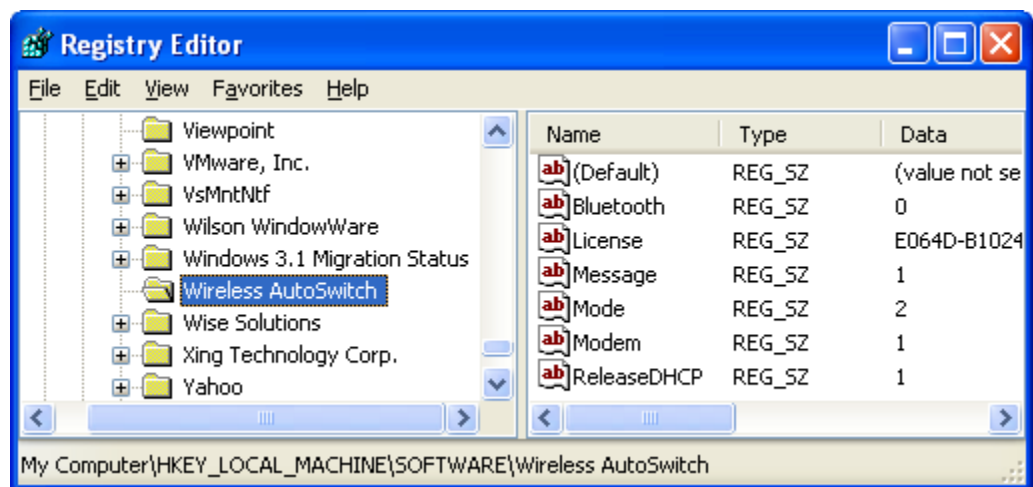
## Changing Options Manually after Installation

All options and settings can be changed through the registry. Open regedit and navigate to HKEY\_LOCAL\_MACHINE\SOFTWARE\Wireless AutoSwitch.

On Windows 7 64 bit the location is:

HKEY\_LOCAL\_MACHINE\SOFTWARE\Wow6432Node\Wireless AutoSwitch

You can change the license key or any other options here by double clicking on the entry and entering a different value.



## Options

### Messages

You can choose how Wireless AutoSwitch handles error messages or no wireless card by choosing one of the following message settings:

- 0 = No message are displayed and if no wireless card the app dies (stops)
- 1 = Message are displayed and if no wireless card the app dies (default)
- 2 = No messages are displayed and if no wireless card re-scan every 1 - 2 minutes

This option can be set during installation with a command line like:  
msiexec /i wirelessautoswitch.msi LICENSEKEY=3333333333 MODE=1  
MESSAGE=0 /q

Or you can change the registry entry after the application is installed:  
HKEY\_LOCAL\_MACHINE\SOFTWARE\Wireless AutoSwitch\Message

### Bluetooth

You can have Wireless AutoSwitch enable/disable all Bluetooth devices when it enables/disables the Wifi cards. The settings are as follows:

- 0 = Bluetooth devices are not managed by Wireless AutoSwitch (default)
- 1 = Bluetooth devices are managed by Wireless AutoSwitch

This option can be set during installation with a command line like:  
msiexec /i wirelessautoswitch.msi LICENSEKEY=3333333333 MODE=1  
MESSAGE=0 BLUETOOTH=1 /q

Or you can change the registry entry after the application is installed:  
HKEY\_LOCAL\_MACHINE\SOFTWARE\Wireless AutoSwitch\Bluetooth

### Modems

You can have Wireless AutoSwitch enable/disable all Modem devices when it enables/disables the Wifi cards. This setting is needed to disable 3G/AirCards/Broadband cards as most are added to the system as a modem. The settings are as follows:

- 0 = Modems devices are not managed by Wireless AutoSwitch
- 1 = Modem devices are managed by Wireless AutoSwitch (default)

This option can be set during installation with a command line like:  
msiexec /i wirelessautoswitch.msi LICENSEKEY=3333333333 MODE=1  
MESSAGE=0 BLUETOOTH=1 MODEM=0 /q

Or you can change the registry entry after the application is installed:  
HKEY\_LOCAL\_MACHINE\SOFTWARE\Wireless AutoSwitch\Modem

### **Release DHCP**

You can have Wireless AutoSwitch issue a DHCP release for the wireless card just before the wireless card is disabled. The settings are as follows:

- 0 = Wireless card is disabled without any DHCP Release issued
- 1 = DHCP Release is issued just before the wireless card is disabled

This option can be set during installation with a command line like:  
msiexec /i wirelessautoswitch.msi LICENSEKEY=333333333 MODE=1  
MESSAGE=0 BLUETOOTH=1 DHCP=1/q

Or you can change the registry entry after the application is installed:  
HKEY\_LOCAL\_MACHINE\SOFTWARE\Wireless AutoSwitch\ReleaseDHCP

Note: This DHCP Release feature only comes into play when going from wireless to wired. We cannot tell when the LAN will be disconnected so we cannot do the same when going from wired to wireless. This was added to help free up IP addresses on the DHCP server.

### **Register DNS**

You can have Wireless AutoSwitch issue the command “ipconfig /registerDNS” every time there is a network switch. This helps clear DNS issues.

- 0 = No “ipconfig /registerdns” command issued
- 1 = “ipconfig / registerdns” command issued every time there is a network switch

This option can be set during installation with a command line like:  
msiexec /i wirelessautoswitch.msi LICENSEKEY=333333333 MODE=1 DNS=1 /q

You can change the registry entry after the application is installed:  
HKEY\_LOCAL\_MACHINE\SOFTWARE\Wireless AutoSwitch\ RegisterDNS

### **Start Disabled**

You can have Wireless AutoSwitch immediately disable all wireless cards when it starts up regardless of the state of the LAN. The settings are as follows:

- 0 = This is the default option and Wireless AutoSwitch only disables wireless on LAN.
- 1 = Wireless Cards are disabled regardless of LAN and the user clicks the shortcut to go back into normal operation.

This option can only be set when installing with a command line (not by manually launching the MSI). To set the option the command line would look like this:  
msiexec /i wirelessautoswitch.msi LICENSEKEY=3333333333 MODE=2  
STARTDISABLED=1 /q

You can change the registry entry after the application is installed:  
HKEY\_LOCAL\_MACHINE\SOFTWARE\Wireless AutoSwitch\StartDisabled

Note: When you set STARTDISABLED to 1 the shortcut is created regardless of mode chosen. If you install with STARTDISABLED set to 0 and then change the registry key to 1, you will only have use of the shortcut if you installed in Mode 1 or 3. The shortcut is only created when installing with [Mode 1 or 3] and with [Mode 2 or 4 AND STARTDISABLED=1].

## **Advanced Installation**

For deployment of Wireless AutoSwitch across multiple machines you have a few options.

1. You could do a silent MSI Installation through a batch file, login script, SMS/SCCM or any other deployment tool using a command similar to:

```
msiexec /i "Wireless AutoSwitch XPV.msi" MODE=1 LICENSEKEY=1111-1111-1111-1111 /q
```

You would specify the filename, mode and license key in the command line.

2. You could create a transform file (MST) that would silently deploy Wireless AutoSwitch with the mode and license key. You can use this option for deployment through group policy.
3. If needed Sase Sham, Inc. could provide you a single MSI file that has no dialogs and is hard coded with the mode and your permanent license key.

Please note: All options have to be in capital letters on the command line (MODE=2 not mode=2). You only need to specify an option on the command line if you are changing the default value. So if you want mode 1 (the default) you would not specify it on the command line.

## What it Does

Wireless AutoSwitch XPV is installed and runs as a service that is set to automatically start. If the user stops the Wireless AutoSwitch program, it will restart automatically on reboot.

The first thing it does is identify all wireless cards and then finds out if they are enabled or disabled. Then it checks if there is a hard-wire connection active. If there is an active wired connection all wireless cards and modems are disabled, if they aren't already disabled.

At this point Wireless AutoSwitch is in a loop looking at the wired connection every 3-6 seconds.

Because the program is in a loop only looking at the wired connection you can manually enable a wireless card and it will not get automatically disabled by Wireless AutoSwitch (Only in Mode 1 and 3). This is useful if you temporarily want both wired and wireless enabled.

The moment the wired connect is disconnected, the wireless cards, and modems, are enabled and Windows takes over and makes a wireless connection if one is available and setup for automatic connection.

Wireless AutoSwitch will only enable or disable the wireless network cards and modems depending on the situation and nothing else. It does not establish the wired or wireless connections, Windows does that.

## Include Wireless Network Adapters

Sometimes Wireless AutoSwitch doesn't recognize a card as a wireless device. To have Wireless AutoSwitch recognize it as wireless and enable/disable it on a LAN connection, create a file called "include.txt" in the installation directory (the default is C:\Program Files\Wireless AutoSwitch). Enter the name of the adapter to be included. You may enter as many adapters as you like, one per line in the text file.

## Exclude Network Adapters

If you wish to exclude a network card from being monitored by Wireless AutoSwitch XPV (as a LAN card), create a file called "exclude.txt" in the installation directory (the default is C:\Program Files\Wireless AutoSwitch). Enter the name of the adapter to be excluded. You may enter as many adapters as you like, one per line in the text file. This comes in handy if you have a virtual adapter that interferes with the normal operation of Wireless AutoSwitch XPV.



## Ignore Wireless Network Adapters

If you don't want Wireless AutoSwitch to enable/disable a particular wireless card then you can have Wireless AutoSwitch ignore this device. Create a file called "ignore.txt" in the installation directory (the default is C:\Program Files\Wireless AutoSwitch). Enter the name of the adapter to be ignored. You may enter as many adapters as you like, one per line in the text file.

## Known Issues

You have to use Windows' built-in utility to manage the wireless card so, Windows Services: "Wireless Zero Configuration" in XP, "Wired AutoConfig" and "WLAN Autoconfig" in Vista and Windows 7, has to be enabled. If you are using the Linksys utility, for example, to manage wireless connections the card may not get disabled.

If there is a WMI issue on the machine where WMI cannot communicate with the network card Wireless AutoSwitch will not work. Wireless AutoSwitch uses WMI to identify which network card is the wireless one, if it can't identify a wireless card it quits.

## Other Products

There are two other products we offer:

1. Wireless AutoSwitch 10 - Works only on Windows XP
2. Wireless AutoOff - Works on XP, Vista, Win7 and Win8

Please note: Wireless AutoOff is a very restrict product that does not automatically switch the wireless card. Please check the website ([www.wirelessautoswitch.com](http://www.wirelessautoswitch.com)) for details.

## Support

Support is available through phone and/or email. Please don't hesitate to contact us with any questions or issues.

Phone: 718-930-1990

Email: [sase@saseshaminc.com](mailto:sase@saseshaminc.com)